

[www.serviciohidraulico.com.mx](http://www.serviciohidraulico.com.mx) 55 5587-4214  
**Servicio Hidráulico Industrial**

[www.serviciohidraulico.com.mx](http://www.serviciohidraulico.com.mx) 55 5587-4214  
**Servicio Hidráulico Industrial**

[www.serviciohidraulico.com.mx](http://www.serviciohidraulico.com.mx) 55 5587-4214  
**Servicio Hidráulico Industrial**



[www.serviciohidraulico.com.mx](http://www.serviciohidraulico.com.mx) 55 5587-4214  
**Servicio Hidráulico Industrial**

[www.serviciohidraulico.com.mx](http://www.serviciohidraulico.com.mx) 55 5587-4214  
**Servicio Hidráulico Industrial**

[www.serviciohidraulico.com.mx](http://www.serviciohidraulico.com.mx) 55 5587-4214  
**Servicio Hidráulico Industrial**



[www.serviciohidraulico.com.mx](http://www.serviciohidraulico.com.mx) 55 5587-4214  
**Servicio Hidráulico Industrial**

[www.serviciohidraulico.com.mx](http://www.serviciohidraulico.com.mx) 55 5587-4214  
**Servicio Hidráulico Industrial**

[www.serviciohidraulico.com.mx](http://www.serviciohidraulico.com.mx) 55 5587-4214  
**Servicio Hidráulico Industrial**



[www.serviciohidraulico.com.mx](http://www.serviciohidraulico.com.mx) 55 5587-4214  
**Servicio Hidráulico Industrial**

[www.serviciohidraulico.com.mx](http://www.serviciohidraulico.com.mx) 55 5587-4214  
**Servicio Hidráulico Industrial**

[www.serviciohidraulico.com.mx](http://www.serviciohidraulico.com.mx) 55 5587-4214  
**Servicio Hidráulico Industrial**

# VÁLVULAS DIRECCIONALES

[www.serviciohidraulico.com.mx](http://www.serviciohidraulico.com.mx) 55 5587-4214  
**Servicio Hidráulico Industrial**

[www.serviciohidraulico.com.mx](http://www.serviciohidraulico.com.mx) 55 5587-4214  
**Servicio Hidráulico Industrial**

[www.serviciohidraulico.com.mx](http://www.serviciohidraulico.com.mx) 55 5587-4214  
**Servicio Hidráulico Industrial**

# Electroválvulas



Modelo	Flujo máximo gpm	Presión psi
CETOP3	10 a 16	4500
CETOP5	18 a 31	4500
CETOP7	35 a 79	4500
CETOP8	82 a 132	4500
CETOP10	150 a 291	4500

**CETOP3**

**CETOP5**

**CETOP7,8,10**

**4WE**



**DG4**



**DSG**



**DMG**



## Válvulas direccionales manuales

www.serviciohidraulico.com.mx 55 5587-4214

www.serviciohidraulico.com.mx 55 5587-4214

www.serviciohidraulico.com.mx 55 5587-4214

Servicio Hidráulico Industrial

Servicio Hidráulico Industrial

Servicio Hidráulico Industrial



Modelo	Capacidad gpm	Presión máx. psi
VCD	16	3000
VM50	16	3000
VM100	27	3000
VM150	40	3000

Válvulas Direccionales de palancas para flujos de 16 a 40 gpm y 3000 psi.



VCD



VM100



HKD

Válvulas Direccionales Manuales de tipo Monoblock de 1 a 5 palancas para flujos hasta de 21gpm y 3500 psi. Puertos de 1/2" y 3/8" con Power Beyond.



Capacidad gpm	Presión máx. psi
21	3500



RD

Válvulas Direccionales Manuales de tipo Monoblock de 1, 2 y 3 palancas para flujos hasta de 30gpm y 3000 psi. Puertos de 3/4" y 1/2" con Power Beyond.



Capacidad gpm	Presión máx. psi
21	3000

VG20

Modelo	Capacidad gpm	Presión máx. psi
VG20	40	3500
VG35	70	3500



VG35



Servicio Hidráulico Industrial

www.serviciohidraulico.com.mx 55 5587-4214

www.serviciohidraulico.com.mx | shi@serviciohidraulico.com.mx | Whatsapp: +52 1 55 4531-2783

www.serviciohidraulico.com.mx 55 5587-4214

www.serviciohidraulico.com.mx 55 5587-4214

Servicio Hidráulico Industrial

Servicio Hidráulico Industrial

Servicio Hidráulico Industrial

## K(B)FD/TG4V, Series Proportional Directional Valves

### General Description

#### KFD/TG4V-5

This version is supplied **without** the integral amplifier.

#### Features and Benefits

- Wide range of spool and flow rate options.
- Electronic feedback LVDT ensures accurate spool position control.
- Internal current feedback provides optimal control.
- Vibration and shock tested.
- Supported by a broad range of amplifiers and auxiliary function modules.
- Full CE electromagnetic compatibility.

#### KBFD/TG4V-5

A range of proportional directional and throttle valves **with** integral control electronics. Factory-set adjustments of gain, spool deadband compensation and offset ensure consistent repeatability valve-to-valve.

The only electrical inputs required are power supply (24V) and a voltage command signal of  $\pm 10V$ . The amplifier is housed in a robust metal enclosure, sealed against ingress of water and other fluids. Electrical connections are via a standard 7-pin plug.

A spool position monitor pin allows the function of the valve to be electrically monitored. Ramp functions, if required, can be generated externally.

### Features and Benefits

- Installation wiring reduced and simplified.
- Standard 7-pin connector.
- Standard 24V DC supply with wide tolerance band.
- Standard  $\pm 10 V$  DC command signals.
- Valve with integrated amplifier selected, ordered, delivered and installed as one performance-tested package.
- Spool position monitor pin to help with troubleshooting.
- Simple valve removal and replacement for service (plug & play).
- Vibration and shock tested.
- Auxiliary DIN rail mounted electronic function modules available.
- Full CE electromagnetic compatibility.
- IP67 valve environmental protection rating.
- Optional valve enable function.



**Types 4WRA and 4WRAE**



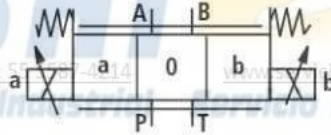
Nominal sizes 6 and 10  
 Component series 2X  
 Maximum operating pressure 315 bar  
 Maximum flow: 42 l/min (NS6)  
 75 l/min (NS10)

Type 4WRAE 6 ...-2X/G24K31/V  
 with integrated electronics (OBE)

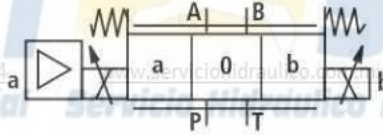
Typ 4WRA 10 ...-2X/G24...K4/V  
 with plug-in connectors and  
 associated control electronics  
 (separate order)

**Symbols**

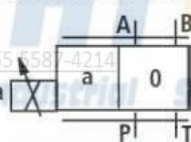
Without integrated electronics  
 Type 4WRA...



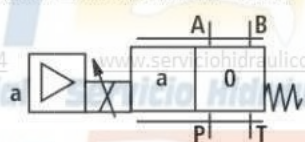
With integrated electronics (OBE)  
 Type 4WRAE...



Types 4WRA... EA...; 4WRA... WA...



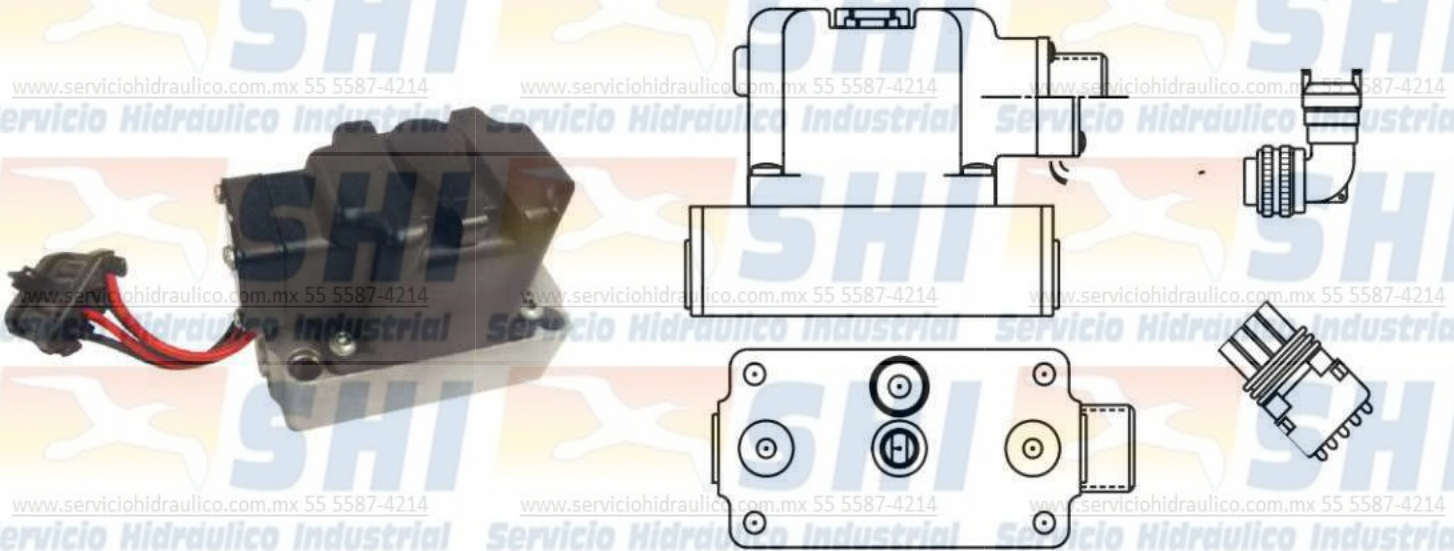
Types 4WRAE... EA...; 4WRAE... WA...



## Pressure Control Valve

### DESCRIPTION

The PCP is a torque-motor actuated, double-nozzle flapper valve that produces a differential output pressure proportional to the applied electrical input signal. It is a single-stage, stand-alone, closed loop pressure control valve which uses internal hydraulic pressure reactions to achieve its closed loop control characteristics.

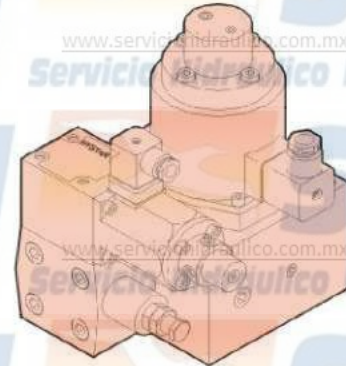


### FEATURES

- Standard manual override
- Withstands mobile equipment vibration and shock conditions
- Controls both pilot-operated pumps/motors and main spool valves
- Optional environmental electrical connector (see PCP Mating Connectors, page 10)
- Self-contained pressure feedback
- Constant scale factor with varying pilot pressure
- Can be used in either closed loop or open loop systems

## Proportional Electro-Hydraulic Relief And Flow Control Valves (40Ω -10Ω Series)

Description		Model Number	EFBG-03-125	EFBG-06-250	EFBG-10-500
Max. Operating Pres.	bar(PSI)		206(2987)	206(2987)	206(2987)
Max. Flow	lpm(USgpm)		125(33)	250(66)	500(132)
Metred Flow Adjustment Range	lpm(USgpm)		1-125 (.26-33)	2-250 (.52-66)	5-500 (1.32-132)
	Rated Current	mA		750	
Flow Controls	Coil Resistance	Ω		40	
	Valve Internal Resistance (A -B)	bar(PSI)		5(72.5)	
	Hysteresis	%		< 7	
	Repeatability	%		< 1	
	Pres. Adj. Range	bar(PSI)		C: 8~140(116~2030) H:10~206(145~3000)	
Pressure Controls	Rated Current	mA		C:700 H:750	
	Coil Resistance	Ω		10	
	Hysteresis	%		< 3	
	Repeatability	%		< 1	
Weight	kg(lbs.)		18(39.6)	33(72.7)	58(127.8)



Graphic Symbols



 **SHI**  
Servicio Hidráulico Industrial

Solución a su Problema Hidráulico en  **24 hrs.**

[www.serviciohidraulico.com.mx](http://www.serviciohidraulico.com.mx) 55 5587-4214

[www.serviciohidraulico.com.mx](http://www.serviciohidraulico.com.mx) 55 5587-4214

[www.serviciohidraulico.com.mx](http://www.serviciohidraulico.com.mx) 55 5587-4214

 **HYSTAR**





 **Commercial Hydraulics**

[www.serviciohidraulico.com.mx](http://www.serviciohidraulico.com.mx) 55 5587-4214

[www.serviciohidraulico.com.mx](http://www.serviciohidraulico.com.mx) 55 5587-4214

[www.serviciohidraulico.com.mx](http://www.serviciohidraulico.com.mx) 55 5587-4214









[www.serviciohidraulico.com.mx](http://www.serviciohidraulico.com.mx) 55 5587-4214

[www.serviciohidraulico.com.mx](http://www.serviciohidraulico.com.mx) 55 5587-4214

[www.serviciohidraulico.com.mx](http://www.serviciohidraulico.com.mx) 55 5587-4214









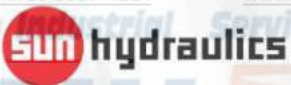
[www.serviciohidraulico.com.mx](http://www.serviciohidraulico.com.mx) 55 5587-4214

[www.serviciohidraulico.com.mx](http://www.serviciohidraulico.com.mx) 55 5587-4214

[www.serviciohidraulico.com.mx](http://www.serviciohidraulico.com.mx) 55 5587-4214





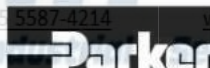














[www.serviciohidraulico.com.mx](http://www.serviciohidraulico.com.mx) 55 5587-4214

[www.serviciohidraulico.com.mx](http://www.serviciohidraulico.com.mx) 55 5587-4214

[www.serviciohidraulico.com.mx](http://www.serviciohidraulico.com.mx) 55 5587-4214

**MONTERREY**  
[www.serviciohidraulico.com.mx](http://www.serviciohidraulico.com.mx) 55 5587-4214

Av. Ruiz Cortinez 917 Ote.  
Col. Vidriera C.P. 64520, Monterrey, N.L. México  
Tel: (81) 8352 5150 con 10 líneas

**COMX**  
[www.serviciohidraulico.com.mx](http://www.serviciohidraulico.com.mx) 55 5587-4214

Latoneros 102, Col. Trabajadores del Hierro,  
C.P. 02650, Ciudad de México  
Tel: (55) 5587 4214 con 20 líneas

**GUADALAJARA**  
[www.serviciohidraulico.com.mx](http://www.serviciohidraulico.com.mx) 55 5587-4214

Agustín Yañez (Washington) 1838  
Col. Moderna, C.P. 44190, Guadalajara, Jalisco  
Tel: (33) 3810 1647 con 5 líneas

[www.serviciohidraulico.com.mx](http://www.serviciohidraulico.com.mx) 55 5587-4214

[www.serviciohidraulico.com.mx](http://www.serviciohidraulico.com.mx) 55 5587-4214

[www.serviciohidraulico.com.mx](http://www.serviciohidraulico.com.mx) 55 5587-4214

[www.serviciohidraulico.com.mx](http://www.serviciohidraulico.com.mx) | [shi@serviciohidraulico.com.mx](mailto:shi@serviciohidraulico.com.mx)

Whatsapp: +52 1 55 4531-2783

[www.serviciohidraulico.com.mx](http://www.serviciohidraulico.com.mx) 55 5587-4214

[www.serviciohidraulico.com.mx](http://www.serviciohidraulico.com.mx) 55 5587-4214

[www.serviciohidraulico.com.mx](http://www.serviciohidraulico.com.mx) 55 5587-4214